

The Law: Illicit Discharge Ordinance

On June 29, 2009, the City of Winder adopted the Illicit Discharge Ordinance in compliance with the Watershed Protection Plan. The following items highlight several of the requirements of this ordinance:

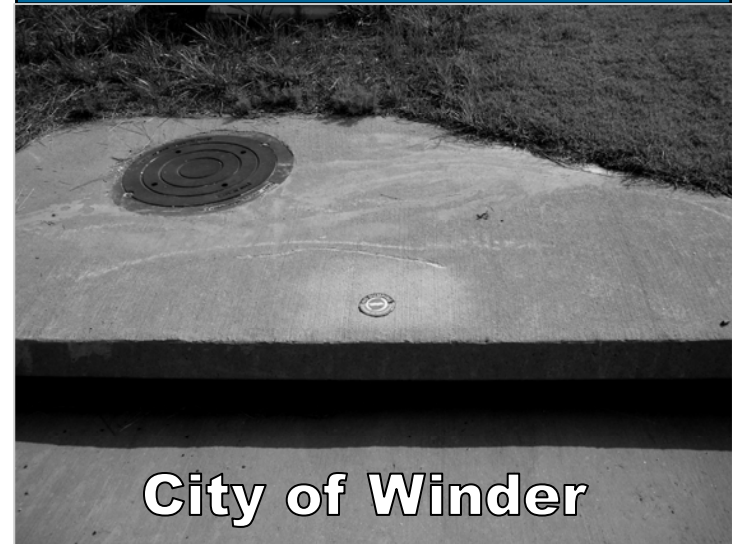
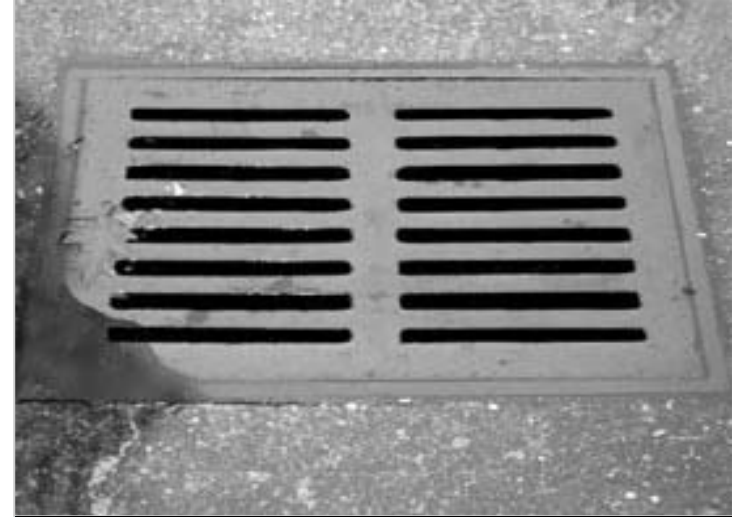
- Illicit discharge is any discharge into the storm system that is not entirely composed of storm water.
- No dumping of oils, soaps, sediment, paint, trash, solvents, chemicals, etc.
- Those found to be in violation to this ordinance will receive a notice of violation and could potentially be fined and possibly go to court.

If you have any questions or concerns or see a violation please contact the Environmental Protection Services Department at 678 425-6815.

**Keeping the creeks clean
starts with you!**



City of Winder
Environmental Protection
Services Department
23 N Jackson St
Winder, Ga. 30680



City of Winder

Creeks and streams do not start here.

Wastewater from sinks and toilets go to the sanitary sewer system where it is treated and then released.

Storm drains are NOT SANITARY SEWERS!!



Stop! You might be polluting a creek

- Do not pour **ANYTHING** into a storm drain. This includes: oils, warm water, car wash runoff, window fluid, paint, bleach, etc.
- Do not allow wastewater from dumpsters, or other containers to drain into the storm drains.
- Stormdrain systems include more than just storm grates in parking lots or on streets. They also include grassy areas called swales, retention ponds, and other features. If you have any questions about this please contact us at 678 425-6815.

Why?

Waste in stormdrains
pollutes our waters.

The City of Winder regulates what goes into the storm sewer system in order to:

Protect our Health: Allowing waste to enter storm drains subjects people to toxins and promotes the growth of harmful bacteria. Allowing this waste to enter our storm drains pollutes our surface water, and in the **City of Winder**, we drink surface water!

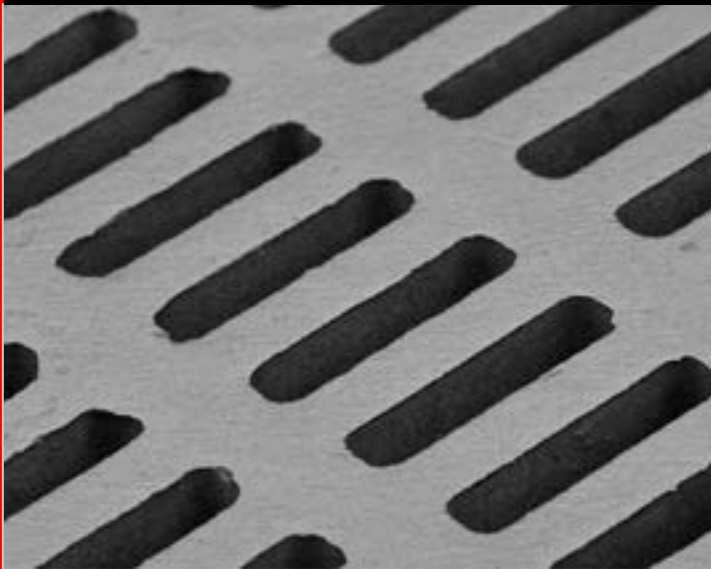
Protect Fish and wildlife: Soaps, cleaning chemicals, oils and sediment are harmful to fish and wildlife.

Comply with the Law: Federal, State, and City governments require water in lakes, rivers and ponds to meet water quality standards. Violators can be fined.

The Creek Starts HERE.

Water collected by a storm drain IS NOT TREATED! It goes directly into our creeks and streams.

Stormdrains are **NOT SANITARY SEWERS!!**



Go!

Properly dispose of
wastes and other materials

- **Carpet cleaners:** Dispose of dirty soapy water in a sink or sanitary sewer. **DO NOT** dump cleaning solutions into a storm drain, on concrete, or outside.
- **Restaurants:** Mop water and other wastewater should be dumped into a sink not outside. Make sure that dumpsters do not leak fluid into storm drains. Dispose of Fats, Oils, and Grease properly.
- **Auto Shops, Auto Suppliers & Auto Dealers:** Recycle used motor oil, antifreeze, etc. Shop drains must be piped to sanitary sewer. Do not store containers of any vehicle fluids outdoors.
- **Painters:** All brush cleaning should occur in a sink, not outside. All paints, thinners, and other chemicals should be disposed properly.

For questions regarding any of these issues please contact the Environmental Protection Services Department at 678 425-3815.